

2022 COVID-19 Protocols and Procedures Effective August 1, 2022

KansasCOM's first priority is to ensure the health and safety of your future patients, as well as the health and safety of all faculty, staff, and students. We have implemented a variety of safety measures to limit the spread of COVID-19 on campus. Our current COVID-19 protocols include the following:

General Guidelines-

- Students, faculty, and staff are encouraged to follow CDC guidelines for COVID-19.
- [Click Here for CDC Information](#)

Masking Guidance for KansasCOM-

- Optional in most campus indoor spaces.
- Masking may be required within OMM and Anatomy Labs, during lab sessions. See your OMM and Anatomy faculty for more details on lab masking requirements.
- We will continue to track the number of positive cases on-campus and the COVID-19 impact in our surrounding communities and utilize that information to adjust masking policies as necessary.
- Please be mindful that individuals will be at varying degrees of comfort related to masking. Professional and caring responses are expected by the KansasCOM community to masking preferences.

COVID-19 Testing, Quarantine, and Isolation Guidelines-

- [Get tested](#) if you have symptoms.
- If you test positive for COVID-19 or suspect that you may have COVID-19 and are awaiting results of a COVID-19 test, please observe the latest [Quarantine and Isolation Guidelines](#) from the CDC.
- Please complete the [Excused Absence Form](#) (Select "Excused Absence Form" from the drop-down menu) if you know you will be out of class due to your COVID-19 positive test. You will be asked to upload confirmation of your positive test along with the form.

Vaccinations and Boosters-

- All KansasCOM students are required to be vaccinated for COVID-19.
- If it has been more than 5 months since you completed your two-dose primary series of Moderna or Pfizer vaccine, please consider getting a booster.

- The best way of preventing disruptions to your academic journey from complications of a COVID-19 infection is to get and remain [up-to-date on COVID-19 vaccinations and boosters](#).

Reporting Confirmed or Suspected Cases (Students)-

Please note – Any KansasCOM student experiencing a medical emergency should call 911. Students are required to complete the [Excused Absence Form](#) (Select "Excused Absence Form" from the drop-down menu) if they are experiencing symptoms, have tested positive, or have been diagnosed with COVID-19. The submission of the form is received by the Office of Student Affairs in an effort to ensure professors are notified of students who are out of class based upon illness. When a confirmed or suspected case of COVID-19 has been reported, a member of Student Affairs will:

- Discuss symptoms or diagnosis with the student and may instruct them to self-isolate or quarantine and not return to campus until the CDC recommended quarantine period has elapsed.
- If applicable, the Student Affairs staff member will notify faculty members that the student is prohibited from returning to campus until they are cleared by Student Affairs. Student Affairs will aid as needed with helping faculty coordinate academic accommodations.
- Coordinate with Office of Facilities to advise which campus locations require cleaning.

Despite all these safety precautions, we acknowledge that some members of our community may either test positive for COVID-19 or suspect they may have the virus but have not yet been tested. Should you suspect you may have been exposed, [you are expected to test](#) to determine whether you are positive.

Common Sense Steps to Ensure Minimizing COVID-19 Exposure On-Campus:

- 1) **COVID-19 Vaccination Requirement-** All KansasCOM students are required to be fully vaccinated against COVID-19. This requirement anticipates future contact with any patients in a clinical setting and contact with vulnerable populations within the community.
- 2) **Promotion of Social Distancing-** We ask all community members to practice common sense social distancing when appropriate.
- 3) **Regular Disinfecting Measures-** KansasCOM staff will be regularly cleaning high traffic areas on-campus to ensure as clean a campus environment as possible.
- 4) **Promotion of Personal Hygiene-** As a medical school, all faculty, staff, and students should practice appropriate personal hygiene practices, including regular washing of hands.
- 5) **Proper Quarantining-** KansasCOM requires all members of the KansasCOM community to remain home when sick or experiencing symptoms of COVID-19.

Practice Hygiene Etiquette

- Avoid close contact with anyone who is sick or experiencing symptoms associated with COVID-19.
- Avoid touching eyes, nose, and mouth.
- Cover cough or sneeze with a tissue, then throw the tissue in the trash and wash or disinfect hands.
- Frequently wash hands with soap and water for at least 20 seconds, especially after going to the bathroom, before eating and after blowing the nose, coughing, or sneezing.
- If soap and water are not readily available, use an ethyl alcohol-based hand sanitizer that contains at least 60%-95% alcohol.
- Clean and disinfect frequently touched objects and surfaces using a regular household cleaning spray or wipe.

Clean and Disinfect

- KansasCOM staff will clean all campus spaces regularly.
- KansasCOM Facilities will continue to clean high-touch surfaces such as door handles, faucets, and elevator buttons frequently throughout their shift.
- Classrooms, restrooms, and other common areas will be cleaned daily, Monday – Friday.
- The cleaning of individual offices and residential spaces are the responsibility of the occupants.
- KansasCOM Facilities, in partnership with the Office of Student Affairs, will adequately clean and disinfect specific locations where a confirmed positive case has been reported. Facilities will communicate with impacted department(s) and identify alternative space as needed.

Mental Health Resources-

Mental health is an important aspect of overall health and well-being. It may be difficult to avoid mental health challenges right now, but there are things we can do to improve our ability to cope with difficult situations and mental health concerns.

Possible Changes to Protocols

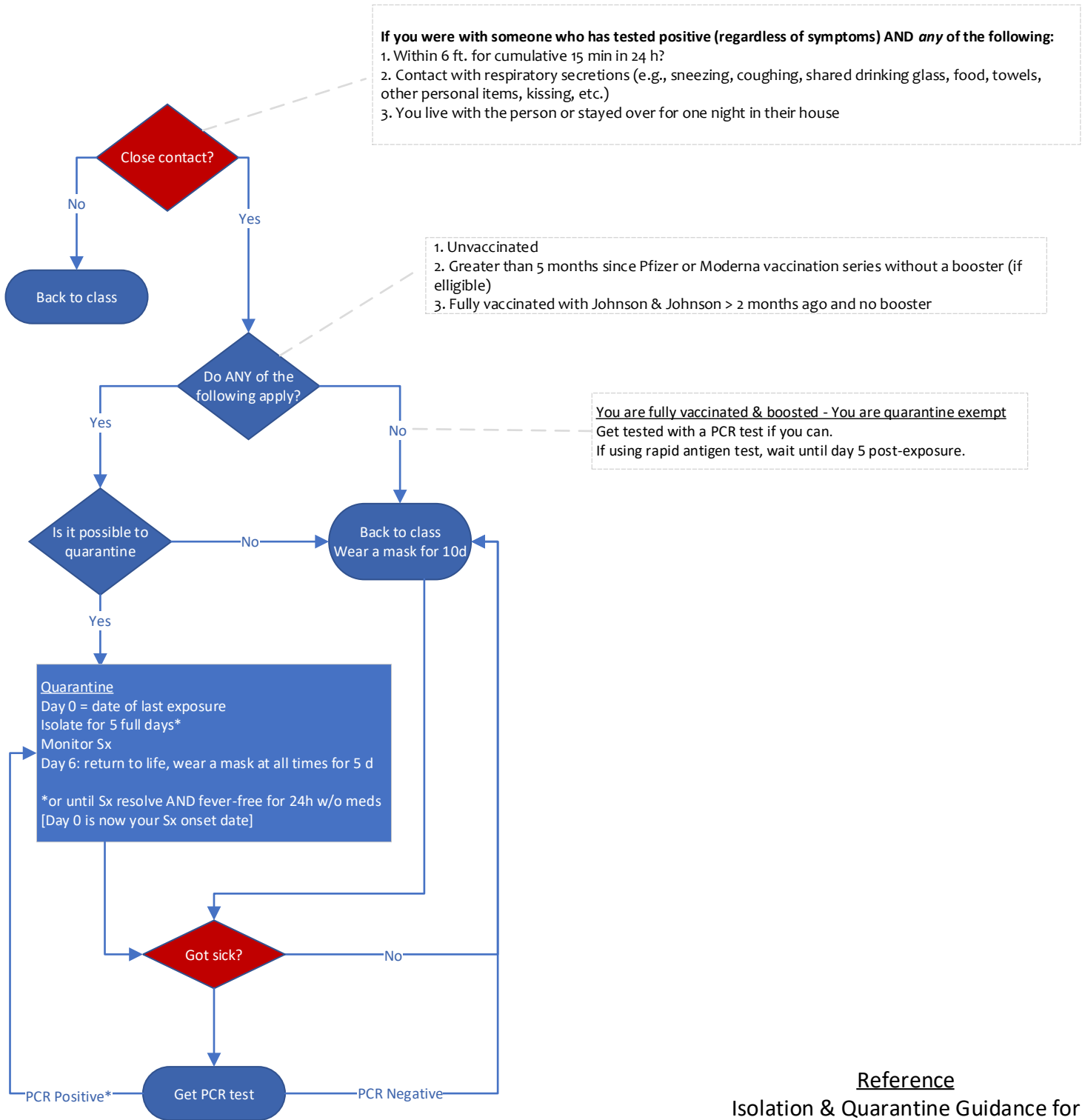
Protocols could change or evolve based upon recommendations by Centers for Disease Control (CDC), World Health Organization (WHO), and/or additional healthcare organizations. If changes are made, updated information will be sent out to all KansasCOM students.

Questions?

Contact the Office of Student Affairs.

COVID-19 Illness/Exposure Flowchart

v1.1, July 19, 2022



Reference
Isolation & Quarantine Guidance for General Public. Sedgwick County Division of Health. February 3, 2022. Accessed July 18, 2022.
<https://www.sedgwickcounty.org/covid-19/sampling-and-testing-information/quarantine-and-isolation-guidance/isolation-and-quarantine-guidance-for-general-public-including-k-12-schools/>